



GMT MONTHLY MEMBERSHIP PROGRESS REPORT

Results as of: 3/31/2020

Multiple District 12

LOCATION: TENNESSEE

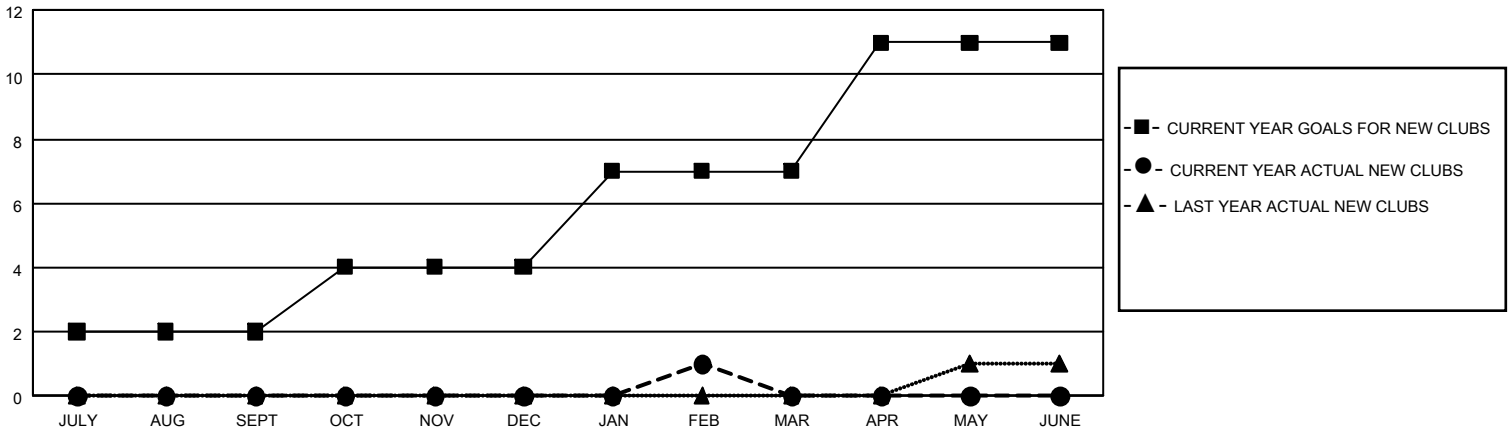
GMT: OPEN

GMT CA 1

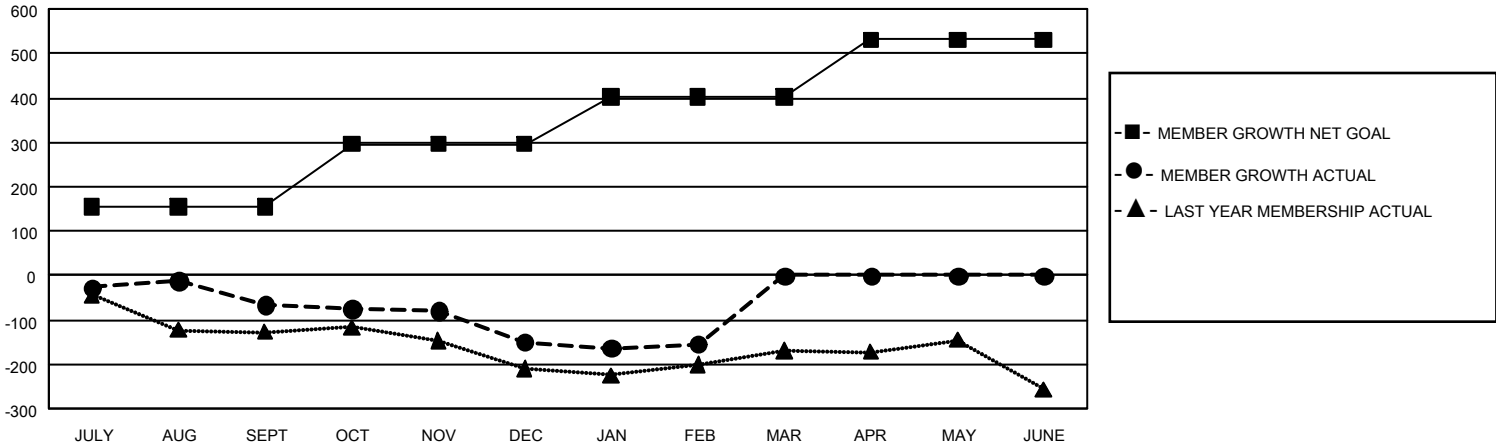
| Clubs | | | |
|-----------------------|---------------|-----------|---------------|
| RESULTS FOR 2019-2020 | | | |
| QUARTER | NEW CLUB GOAL | NEW CLUBS | DROPPED CLUBS |
| JULY/AUG/SEPT | 6 | 0 | 0 |
| OCT/NOV/DEC | 6 | 0 | 2 |
| JAN/FEB/MAR | 9 | 1 | 1 |
| APR/MAY/JUNE | 12 | 0 | 0 |

| Members | | | |
|-----------------------|------------------------|----------------------|--|
| RESULTS FOR 2019-2020 | | | |
| QUARTER | MEMBER GROWTH NET GOAL | MEMBER GROWTH ACTUAL | DROPPED MEMBERS ACTUAL (including transfers) |
| JULY/AUG/SEPT | 468 | 152 | 191 |
| OCT/NOV/DEC | 420 | 62 | 133 |
| JAN/FEB/MAR | 318 | 116 | 99 |
| APR/MAY/JUNE | 387 | 0 | 0 |

GOALS AND ACTUAL NEW CLUBS CUMULATIVE



GOALS AND ACTUAL MEMBERS CUMULATIVE



| | | | |
|------------------------|--|---------------------------------|-------------|
| DROPPED CLUBS: 0 | 0 CLUBS OF 0 ADDED 1 OR MORE NEW MEMBERS | <u>GENDER DISTRIBUTION</u> | |
| <u>DROPPED MEMBERS</u> | | MALE | 0 (100.00%) |
| DECEASED | 0 | FEMALE | 0 (100.00%) |
| CLUB CANCELLED | 0 | TOTAL FAMILY UNIT MEMBERS | |
| OTHER | 0 | 0 | |
| TOTAL | 0 | FAMILY MEMBERS PAYING HALF DUES | |
| | | 0 | |

[CLICK HERE FOR CUMULATIVE MEMBERSHIP DATA](#)